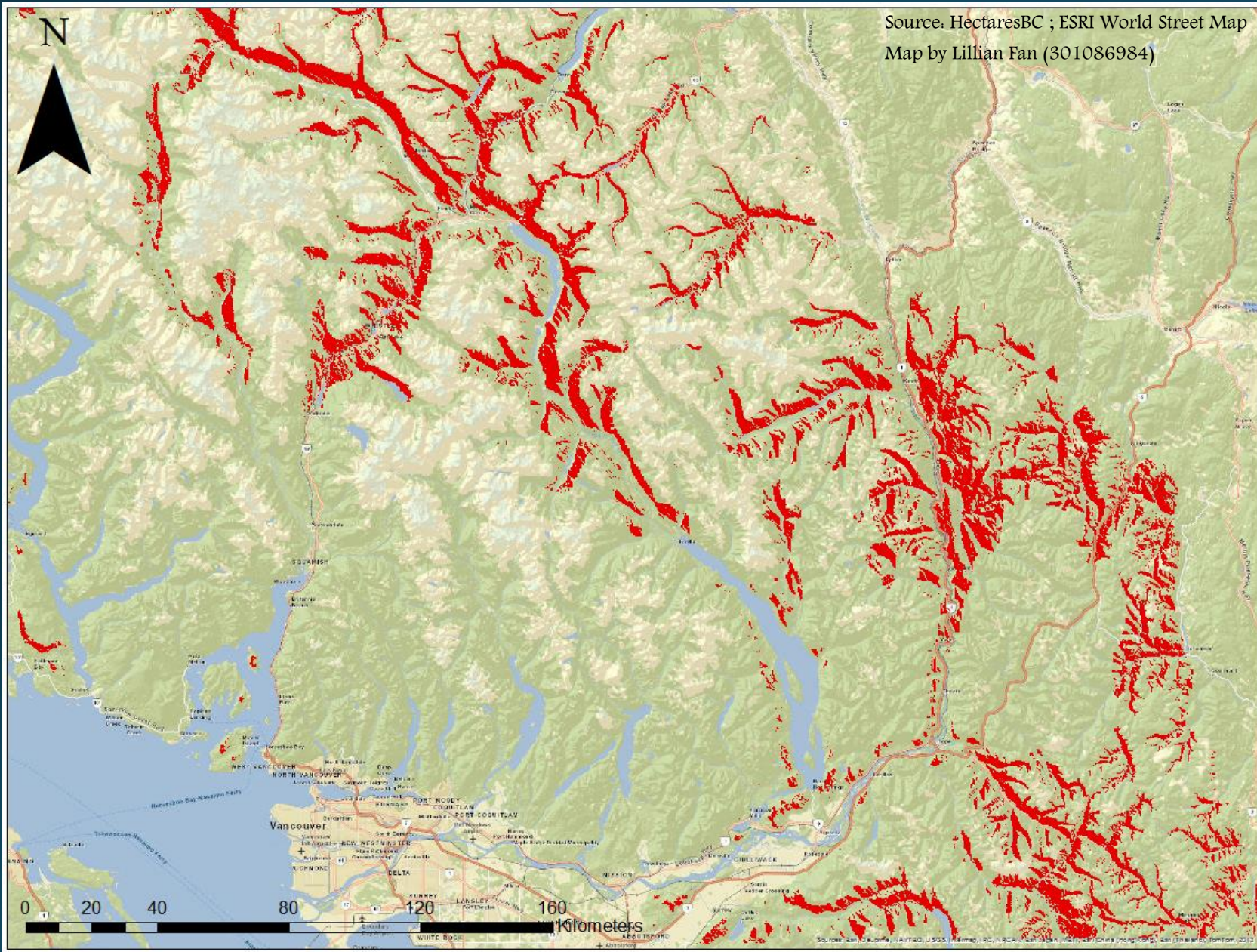


# Most suitable area for Truffle cultivation in Southwest British Columbia, Canada



*Tuber melanosporum*, also known as the (French) black truffle or Périgord truffle are the “fruit” of ectomycorrhizal fungi. This species of fungus typically grows in the tree roots of Common European Hazelnut, Holly Oak, and English Oak. Hence, to find a suitable place to grow black truffles, one must find the most suitable areas to grow these host trees.

The red areas on the map shown on the left are places that are suitable areas for truffles and host trees growth. The following parameters were used to determine the most suitable area:

\*suitable areas are all currently forested areas

Parameter	Scale
Elevation	400-1500m a.s.l
Rainfall	800-2000 mm/year
Aspect	South or West

